



ANNUAL STUDENT-LED CLINIC SYMPOSIUM

*SPENCER FOX ECCLES SCHOOL OF MEDICINE
UNIVERSITY OF UTAH*

JANUARY 27, 2025



COMMUNITY HEALTH WORKERS PARTNERING WITH MEDICAL STUDENTS TO PROMOTE EXPERIENTIAL SERVICE LEARNING IN A STUDENT LED CLINIC

WESLEY ALLEN, KARISHMA SHAH, JAZMINE ABRIL, SONIA SEHGAL, SILVIA SOULE, SONJA
RAAUM,MD, KAMAILE TRIPP CHW, PRINCESS BOMBYCK CHW, KRISTINE SNYDER,MPH,
RAWAD FARHAT MD,MSPH

SPENCER FOX ECCLES SCHOOL OF MEDICINE
UNIVERSITY OF UTAH

DISCLOSURES



The programs described in this publication are supported by the Health Resources and Services Administration (HRSA) of the U.S. Department of Health and Human Services (HHS) as part of two awards totaling \$17.7 million and \$15.3 million with 10 percent financed with non-governmental sources. The ideas expressed in this presentation are those of the author(s) and do not necessarily represent the official views of, nor an endorsement, by HRSA, HHS, or the U.S. Government. For more information, please visit [HRSA.gov](https://www.hrsa.gov).

MISSION-DRIVEN PROGRAM

- With the MD Program, students have the unique opportunity to serve in up to five Student-Led Clinics (Rose Park, South Main, Midvale, People's Clinic, and 4th Street).
- Students will spend one to two half-days per week in these student-led clinics.
- Student care delivery is supervised by our primary care provider faculty, with a strong focus on **Social Determinants of Health (SDOH)**.

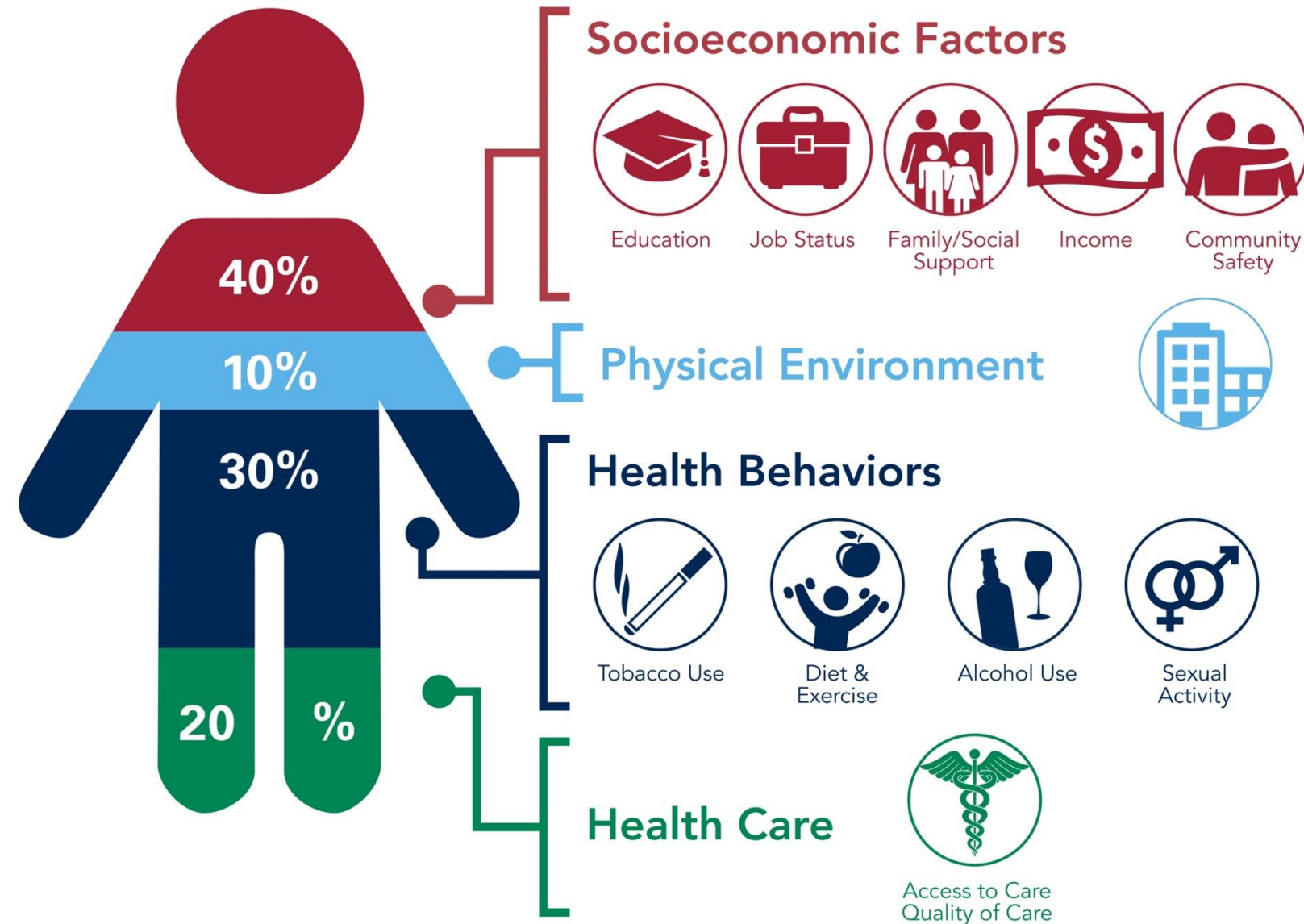
BACKGROUND

Social Determinants of Health (SDOH)
play a critical role in Health Outcomes

30-55%



BACKGROUND



➤ SDOH Impact

- ➔ **20 percent** of a person's health and well-being is related to **access to care** and **quality of services**
- ➔ The **physical environment, social determinants** and **behavioral factors** drive **80 percent** of health outcomes

BACKGROUND



DIFFERENTIALS

MEDICATIONS

DIAGNOSTIC TESTS

COMPLICATIONS

AFFORDABLE HOUSING

HEALTHCARE ACCESS

CULTURAL PERCEPTIONS

LANGUAGE BARRIERS

FOOD INSECURITY

INTERPROFESSIONAL TEAM COLLABORATION

- Pharmacy
- Dental
- DNP w/Women's Health
- Behavioral Health
- Doctorate of Behavioral Health Intern
- Food Pharmacy
- CHW

BACKGROUND

LUCKILY...

Community Health Workers



BACKGROUND

With the support of HRSA, a **Community Health Worker** was hired to support the efforts of the Rose Park Student Led Clinic in September of 2023.

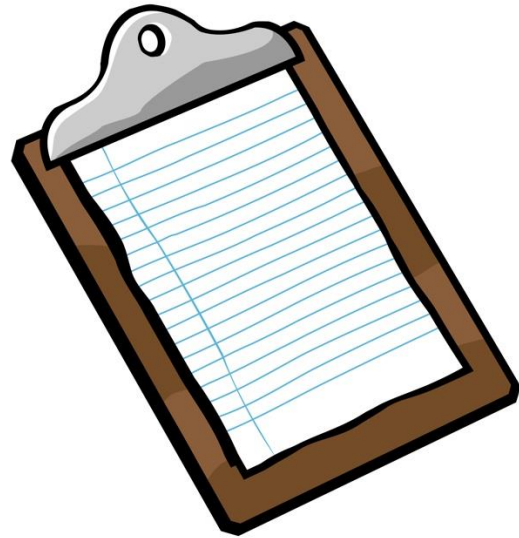


BACKGROUND

Since then, **62 medical students in Rose Park** have had the chance to work alongside the CHW in weekly clinical assignments along with numerous additional students in volunteering opportunities.



METHODS MEASURING THE IMPACT



SURVEY

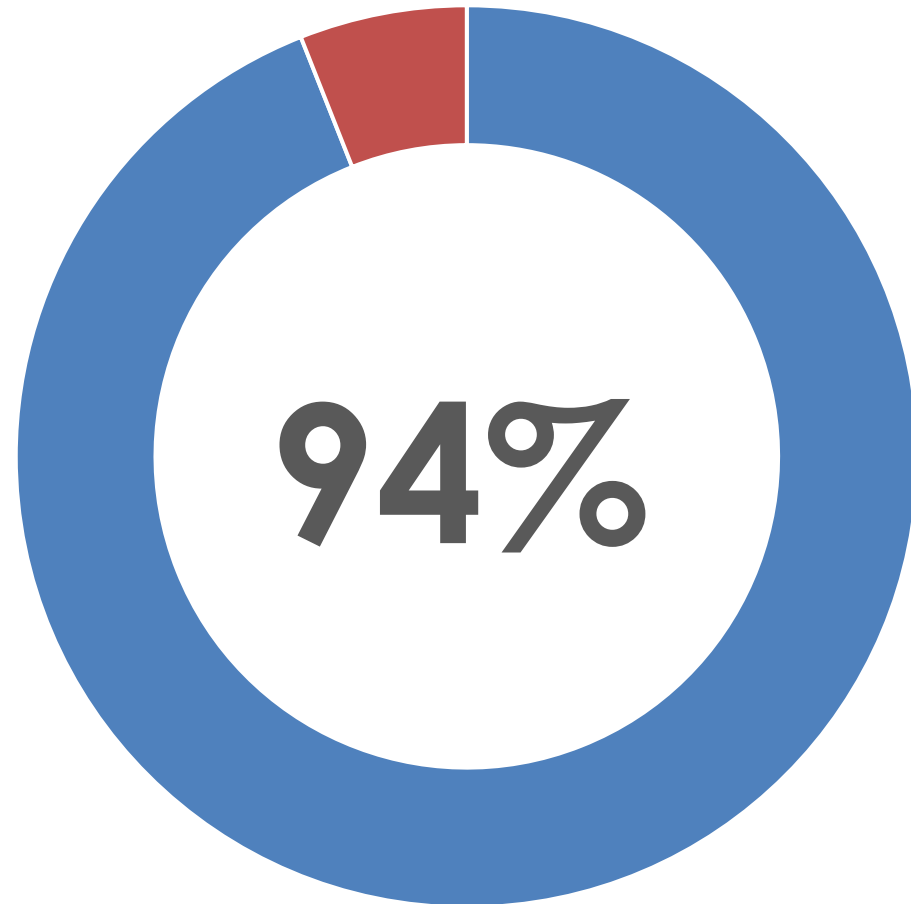
62 students



FOCUS GROUP

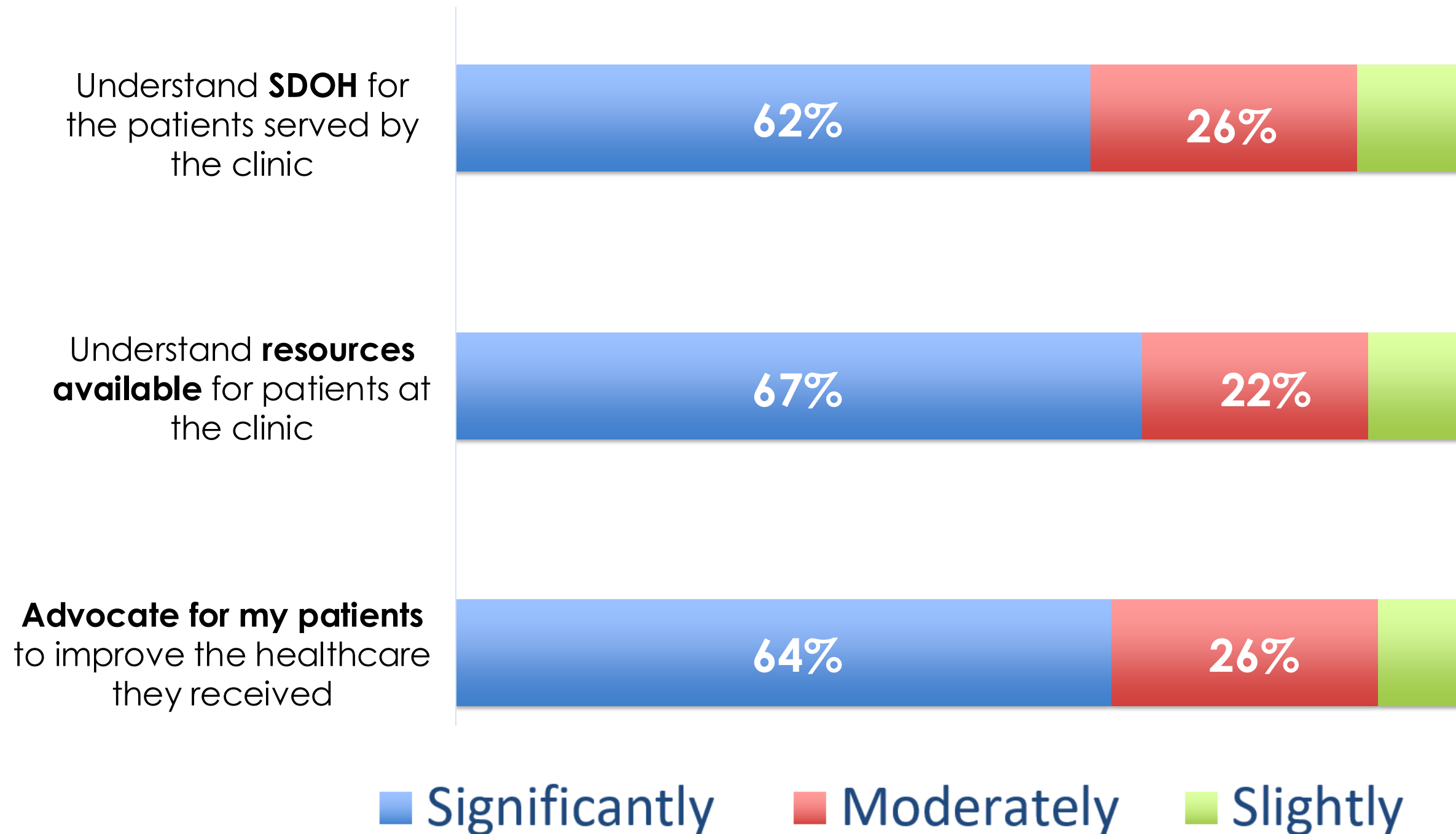
12 students

SURVEY RESULTS



Students Reported Interacting with
the Community Health Worker

Please rate how valuable the Community Health Worker was in increasing your ability to do the following:



OUTCOMES FOCUS GROUP THEMES



FOCUS GROUP QUOTES

“ They (CHWs) brought improvement to clinic flow since we were able to allocate SDOH care to them. Further, being longitudinally experienced in the community, they brought a sense of cultural understanding that we could not. It greatly enriched our patient's experience in feeling cared for and understood. Princess Bombyck, specifically, is just phenomenal at what she does.”



FOCUS GROUP QUOTES

“They (CHWs) brought **improvement to clinic flow** since we were able to allocate SDOH care to them. Further, being longitudinally experienced in the community, they brought a sense of cultural understanding that we could not. It greatly enriched our patient's experience in feeling cared for and understood. Princess Bombyck, specifically, is just phenomenal at what she does.”

FOCUS GROUP QUOTES

“They (CHWs) brought improvement to clinic flow since we were able to allocate SDOH care to them. Further, being longitudinally experienced in the community, they **brought a sense of cultural understanding that we could not**. It greatly enriched our patient's experience in feeling cared for and understood. Princess Bombyck, specifically, is just phenomenal at what she does.”

FOCUS GROUP QUOTES

“They (CHWs) brought improvement to clinic flow since we were able to allocate SDOH care to them. Further, being longitudinally experienced in the community, they brought a sense of cultural understanding that we could not. It **greatly enriched our patient's experience in feeling cared for and understood**. Princess Bombyck, specifically, is just phenomenal at what she does.”

FOCUS GROUP QUOTES

“There are many suggestions made by the CHW that I had **not considered or did not know were available** to my patients. She did a phenomenal job following up and making sure people were well taken care of.”

FOCUS GROUP QUOTES

“It is amazing to have an educated resource to connect with patients so they can get the specific help they need, **rather than just offering that these resources exist and hoping the patient finds them on their own**”

MY EXPERIENCE:

MY EXPERIENCE:



Thank You

